



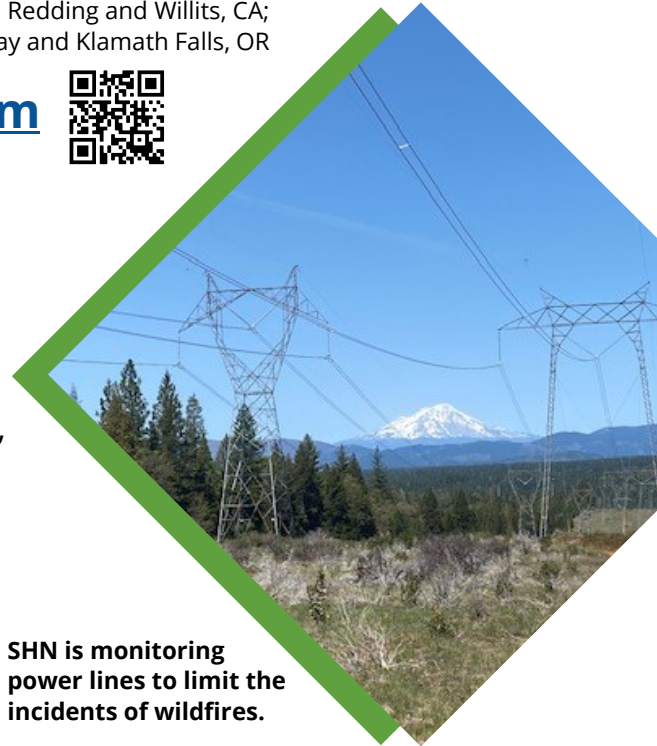
Offices in Eureka, Fort Bragg, Redding and Willits, CA;  
and in Coos Bay and Klamath Falls, OR

[shn-engr.com](http://shn-engr.com)



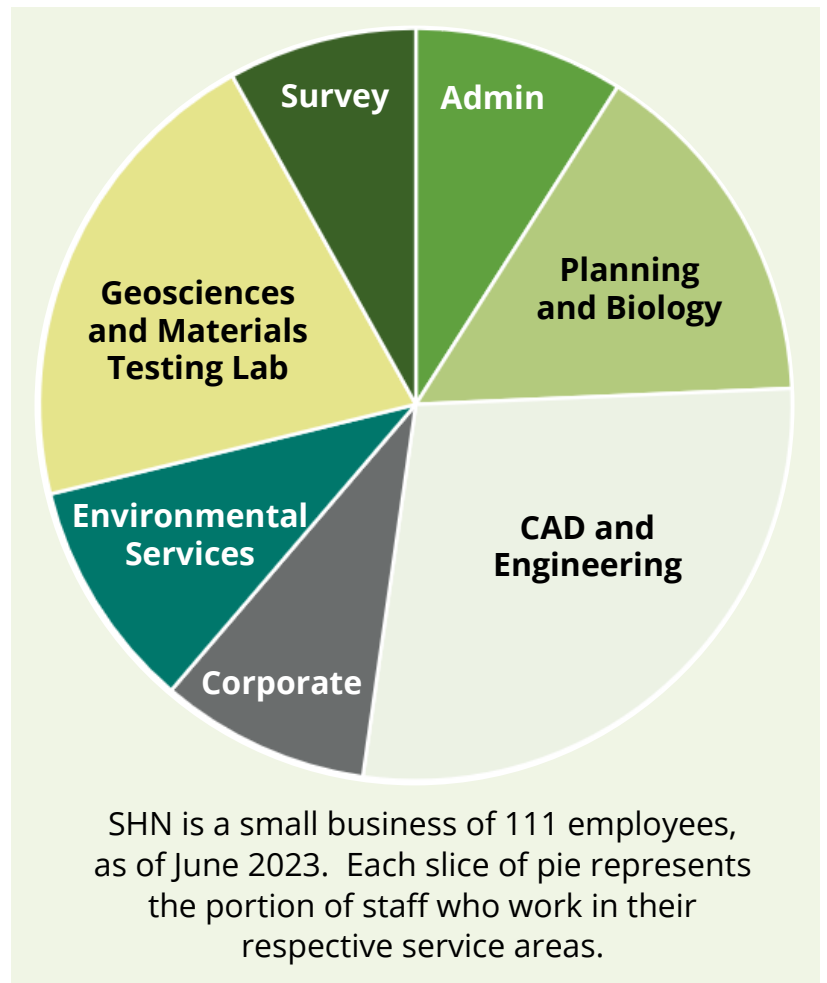
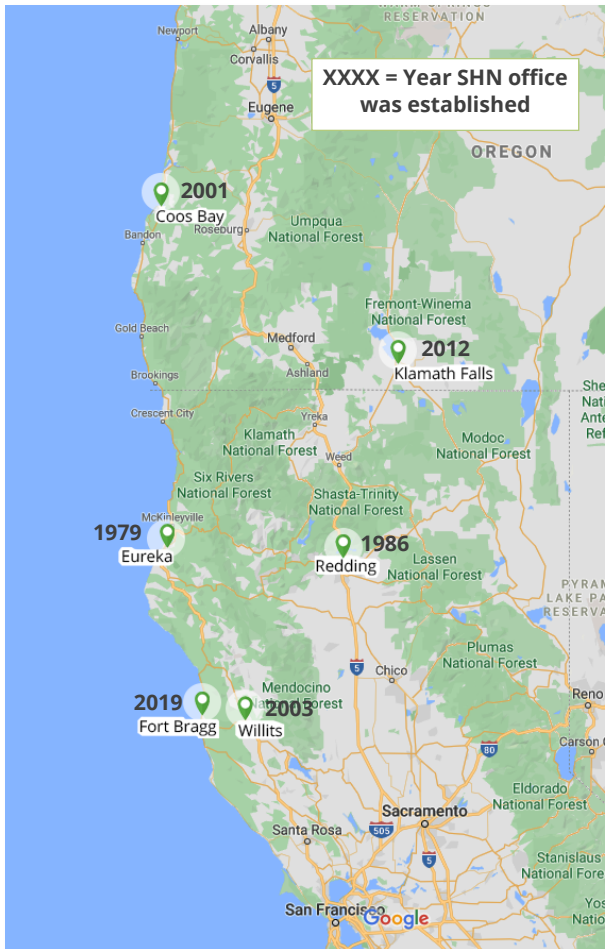
SHN is a multidisciplinary firm providing:

- Civil and environmental engineering
- Environmental investigation and remediation
- Biological/botanical surveys, wetland delineations
- Geosciences, geotechnical engineering, hydrogeology,
- Surveying and unoccupied aerial vehicles (drones)
- Environmental and municipal planning
- Materials testing and special inspections
- Construction observation and management
- Stormwater management and compliance



SHN is monitoring power lines to limit the incidents of wildfires.

Founded in 1979, SHN began in Eureka, California, and now serves clients from six offices in Southern Oregon and Northern California.



# SHN Grows Communities

SHN is an employee-owned small business of civil and environmental engineers, geologists and geotechnical engineers, planners, surveyors, environmental scientists, and construction managers. With our range of professional services, you can work with a single firm from initial environmental permitting to final construction sign-off.

Visit our website [shn-engr.com](http://shn-engr.com).



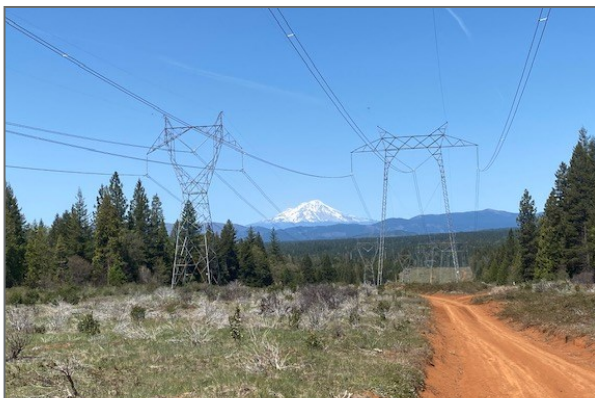
Setting an acoustic meter for bat surveys.



Community Skate Date using the new Point Arena pier and parking area. SHN provided design, planning and permitting, and construction management.



SHN geologists characterized potential alternative routes for the Last Chance Grade section of Highway 101.



SHN environmental scientists, engineers, and geologists inspect transmission lines to address the nexus between energy distribution and wildfires.



SHN materials specialists sample concrete at the Punta Gorda lighthouse.



[shn-engr.com](http://shn-engr.com)

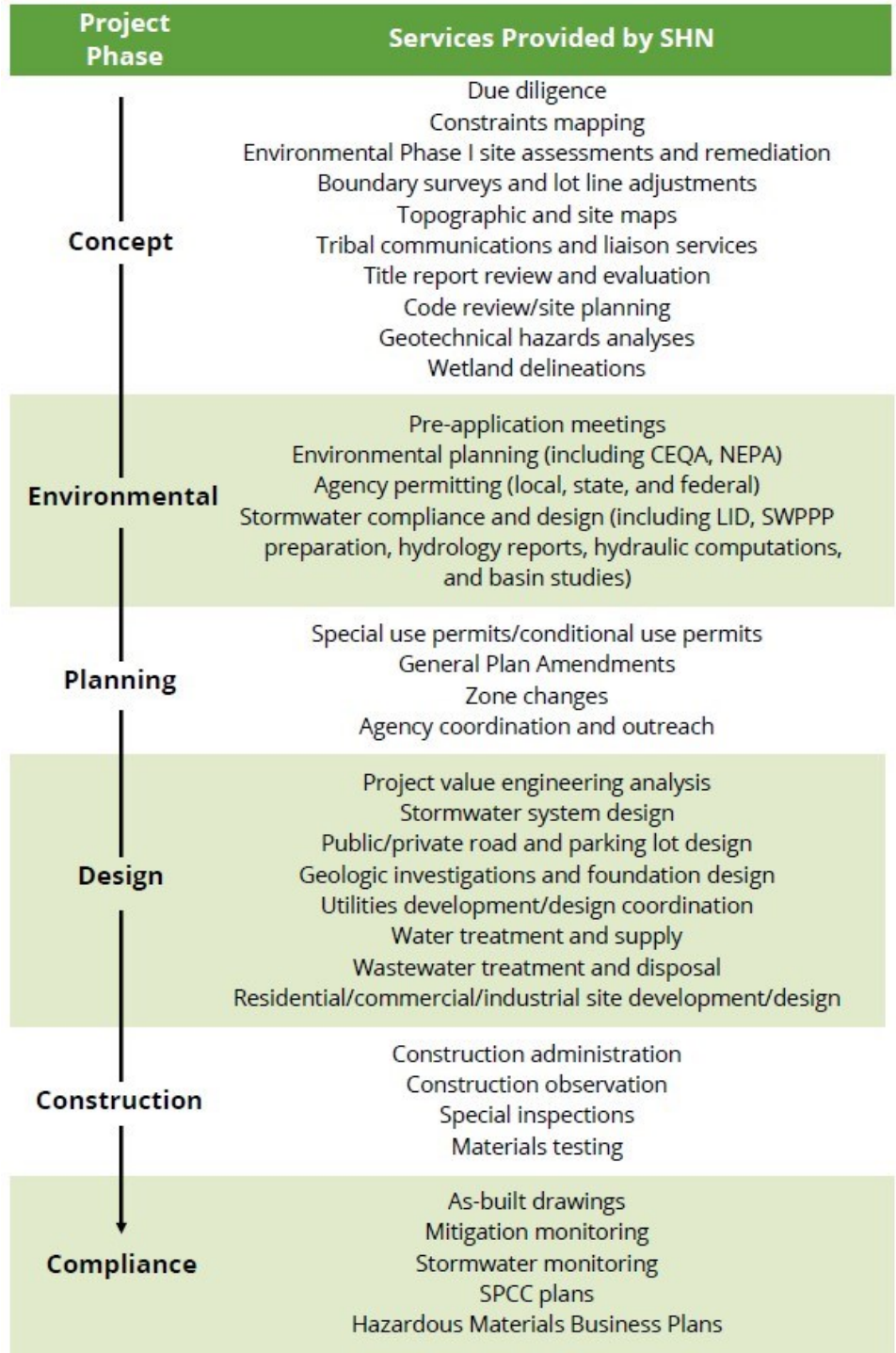
# SHN's Mission: to deliver solutions that improve our communities.



For larger developments and those with specific challenges, SHN provides needed services in one firm, limiting the need for numerous subconsultants. Our staff enjoy opportunities to learn many skills and work across disciplines.



[shn-engr.com](http://shn-engr.com)



SHN is providing engineering, geosciences, planning, biology, and environmental services for redevelopment of pulp mills on the Samoa Peninsula, Humboldt Bay.

## SHN's Senior Staff

### Mike Foget, PE

CEO and  
Senior Engineer  
Corporate  
[mfoget@shn-engr.com](mailto:mfoget@shn-engr.com)

### Garry Rees, AICP

Planning Principal and  
Senior Planner  
Eureka, CA  
[grees@shn-engr.com](mailto:grees@shn-engr.com)

### Bruce R. Grove Jr.

Regional Principal and  
Senior Planner  
Redding, CA  
[bgrove@shn-engr.com](mailto:bgrove@shn-engr.com)

### Jason Island, PE

Regional Principal and  
Senior Engineer  
Fort Bragg, CA  
[jisland@shn-engr.com](mailto:jisland@shn-engr.com)

### Jared O'Barr, PE

Civil Engineering Principal  
and Senior Engineer  
Eureka, CA  
[jobarr@shn-engr.com](mailto:jobarr@shn-engr.com)

### Anders Rasmussen, PE

Regional Principal and  
Senior Engineer  
Klamath Falls and Coos Bay, OR  
[arasmussen@shn-engr.com](mailto:arasmussen@shn-engr.com)

### Jason Buck, PG

Geosciences Principal and  
Senior Geologist  
Eureka, CA  
[jbuck@shn-engr.com](mailto:jbuck@shn-engr.com)

### Erik Nielsen, CHG

Environmental Services  
Principal, Sr. Geologist  
Eureka, CA  
[enielsen@shn-engr.com](mailto:enielsen@shn-engr.com)

### Walter White, PLS

Surveying Principal and  
Senior Surveyor  
Coos Bay, OR  
[wwhite@shn-engr.com](mailto:wwhite@shn-engr.com)

### Sheri Woo, PE

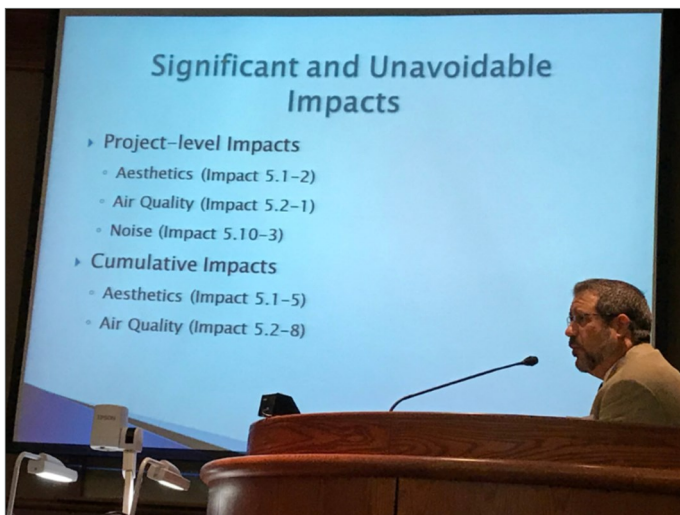
Director of Business  
Development  
Corporate  
[swoo@shn-engr.com](mailto:swoo@shn-engr.com)

### Brenda Sigler

Chief Financial Officer  
Corporate  
[bsigler@shn-engr.com](mailto:bsigler@shn-engr.com)

### Dave Gonzales

Materials Testing and Special  
Inspections Director  
Eureka, CA  
[dgonzales@shn-engr.com](mailto:dgonzales@shn-engr.com)



SHN environmental planners wrote and coordinated the Dignity Health Pavilion EIR, Redding, California.



SHN engineers designed and managed construction of the City of Eureka's Waterfront Drive Extension.



SHN engineers,  
geologists, and materials  
testing specialists worked  
until sunset at the Punta  
Gorda lighthouse.

